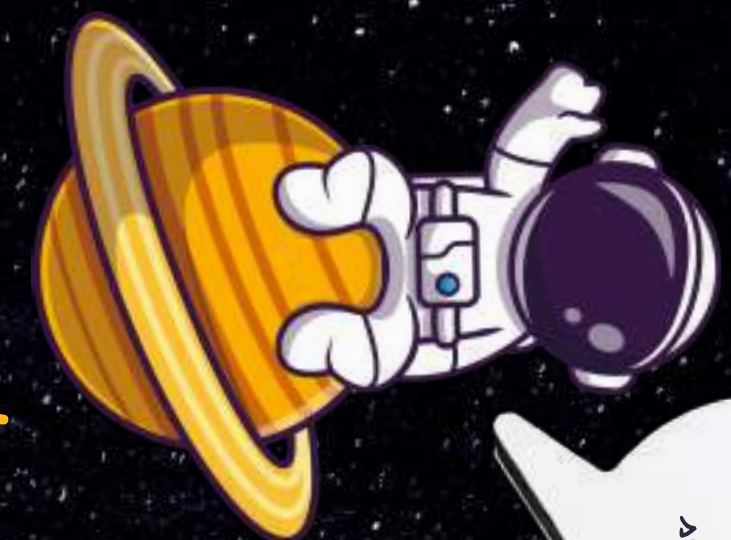


Cesme-Crappe

Les boucles

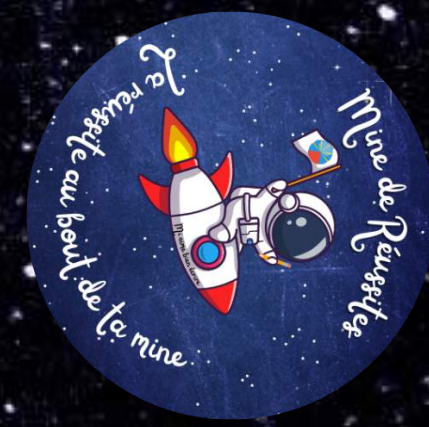
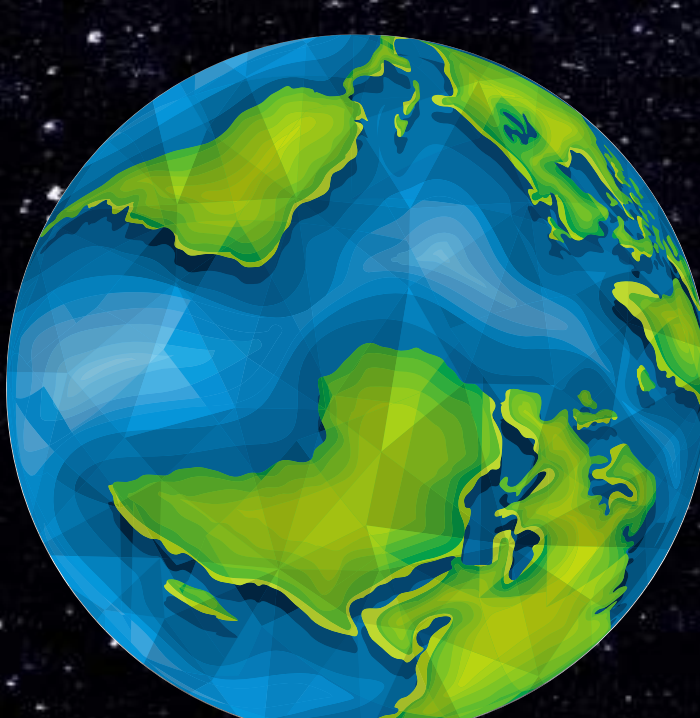
Aide-moi à retenir
un Cerve !

Départ



A grid of 20 colorful asteroids arranged in two rows of ten. Each asteroid has a white label with a cursive letter or syllable. The letters are: Row 1: ee, el, lle, leel, lle, lle, alle, alle, ale, lle. Row 2: lle, leel, lle, lleel, lle, alle, alle, alle, alle, lle. A blue comet streaks from the top row towards the bottom row. Two orange rockets are shown: one launching from the top row and another landing on the bottom row. The background is a dark space with white stars.

Arrivée

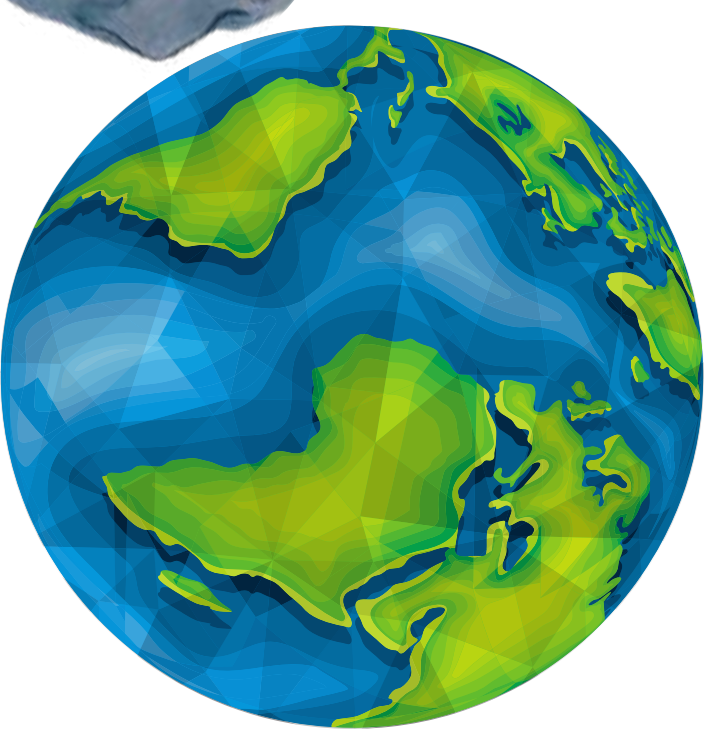
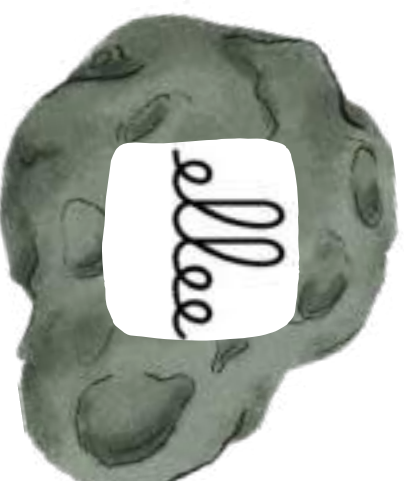
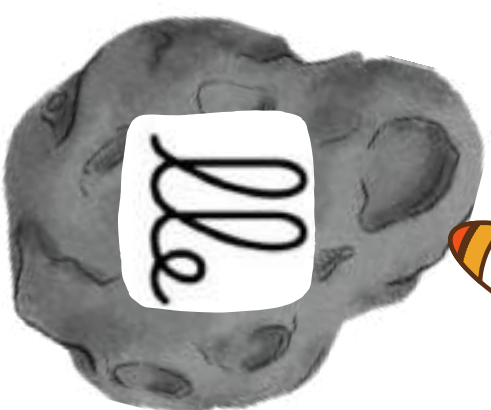
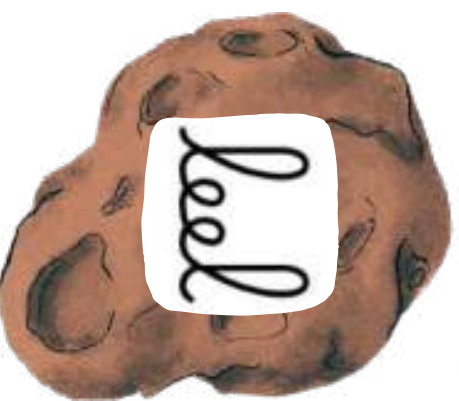
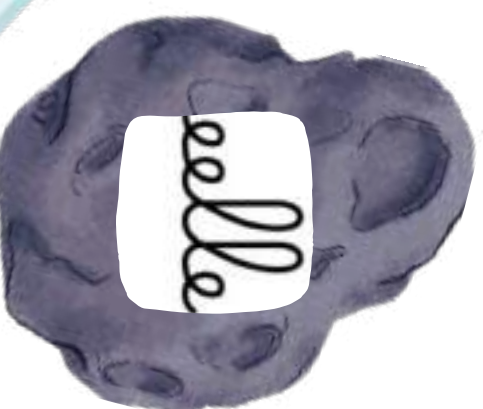
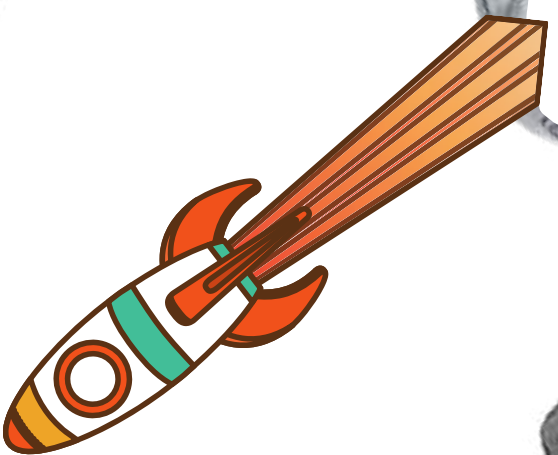
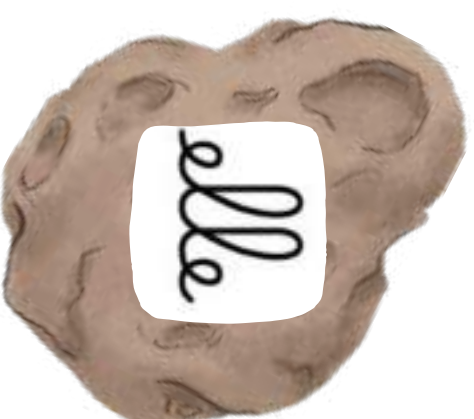
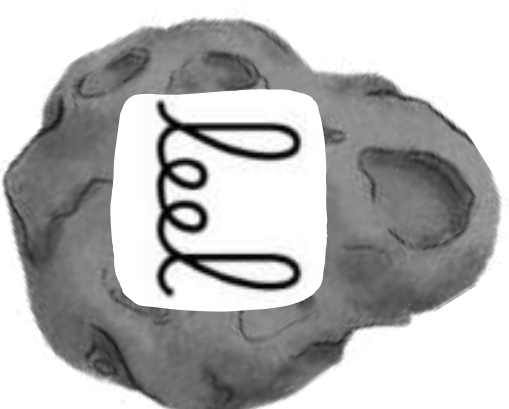
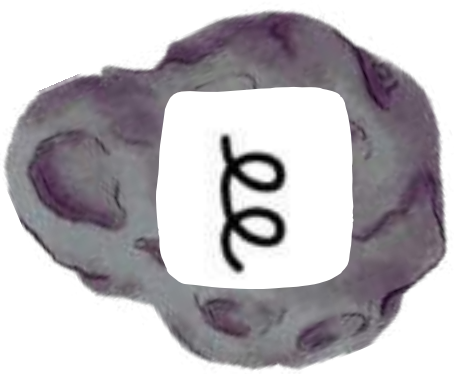
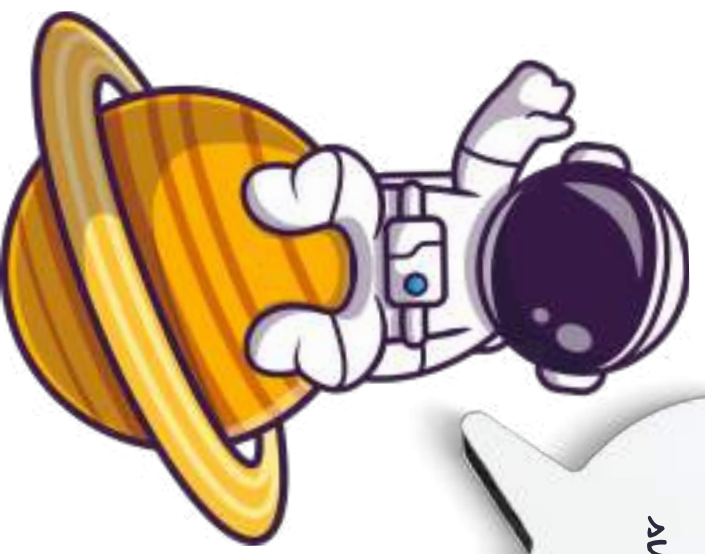


Cosmo-Graphes

Les boucles



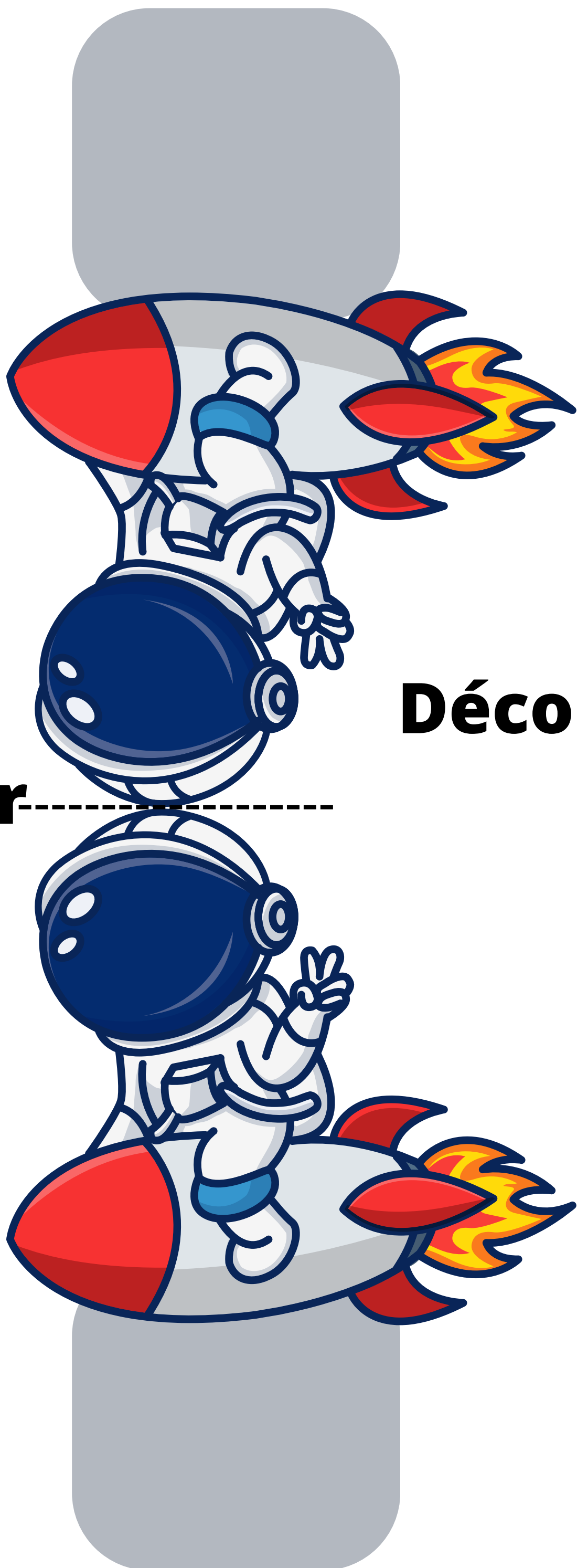
Départ



Arrivée



**A coller sur un bouchon
de bouteille de lait**



Plier-----

**Découper plier et coller pour
un pion en volume**